

LINE LINK Pendant-up&downward

MH50FD





MH50FD

Basic Parameters

Material	AL6063-T5, spraying surface
IP Grade	IP20

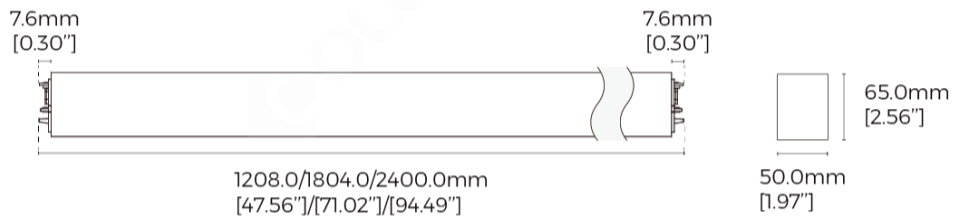
Electrical Parameters

Input Voltage	AC220-240V
Control	Non-Dimming,1-10V Dimming,DALI Dimming
Luminaire Lifespan	5 years

Optical Parameters

Version	Regular,High efficiency,Regular-3 CCT Dial Switch,High efficiency-3 CCT Dial Switch
Length	1200mm,1800mm,2400mm
CRI	>80,>90
CCT	2700K,3000K,4000K,6500K,3000K-4200K-6500K
Beam Angle	100°

Dimensions



Luminaire Parameters

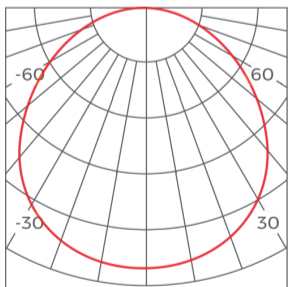
Version	Size	Power(W)	PCB Current(A)	CRI	CCT	Lumens(LM) @White, Sliver	Lumens(LM) @Black
Regular-3 CCT Dial Switch	1800	90	2	>80	4200K	9900	8910
Regular-3 CCT Dial Switch	2400	120	2.7	>80	4200K	13200	11880
Regular-3 CCT Dial Switch	1200	58	1.3	>90	4200K	5486.8	4938.12
Regular-3 CCT Dial Switch	1800	90	2	>90	4200K	8514	7662.6
Regular-3 CCT Dial Switch	2400	120	2.7	>90	4200K	11352	10216.8
Regular-3 CCT Dial Switch	1200	58	1.3	>80	3000K	6090	5481
Regular-3 CCT Dial Switch	1800	90	2	>80	3000K	9450	8505
Regular-3 CCT Dial Switch	2400	120	2.7	>80	3000K	12600	11340
Regular-3 CCT Dial Switch	1200	58	1.3	>90	3000K	5237.4	4713.66
Regular-3 CCT Dial Switch	1800	90	2	>90	3000K	8127	7314.3
Regular-3 CCT Dial Switch	2400	120	2.7	>90	3000K	10836	9752.4
Regular-3 CCT Dial Switch	1200	58	1.3	>80	6500K	6090	5481
Regular-3 CCT Dial Switch	1800	90	2	>80	6500K	9450	8505
Regular-3 CCT Dial Switch	2400	120	2.7	>80	6500K	12600	11340
Regular-3 CCT Dial Switch	1200	58	1.3	>90	6500K	5237.4	4713.66
Regular-3 CCT Dial Switch	1800	90	2	>90	6500K	8127	7314.3
Regular-3 CCT Dial Switch	2400	120	2.7	>90	6500K	10836	9752.4

Regular	1200	58	13	>80	4000K	6380	5742
Regular	1800	90	2	>80	4000K	9900	8910
Regular	2400	120	2.7	>80	4000K	13200	11880
Regular	1200	58	13	>90	4000K	5486.8	4938.12
Regular	1800	90	2	>90	4000K	8514	7662.6
Regular	2400	120	2.7	>90	4000K	11352	10216.8
Regular	1200	58	13	>80	2700K	5423	4880.7
Regular	1800	90	2	>80	2700K	8415	7573.5
Regular	2400	120	2.7	>80	2700K	11220	10098
Regular	1200	58	13	>90	2700K	4663.78	4197.402
Regular	1800	90	2	>90	2700K	7236.9	6513.21
Regular	2400	120	2.7	>90	2700K	9649.2	8684.28
Regular	1200	58	13	>80	3000K	5742	5167.8
Regular	1800	90	2	>80	3000K	8910	8019
Regular	2400	120	2.7	>80	3000K	11880	10692
Regular	1200	58	13	>90	3000K	4938.12	4444.308
Regular	1800	90	2	>90	3000K	7662.6	6896.34
Regular	2400	120	2.7	>90	3000K	10216.8	9195.12
Regular	1200	58	13	>80	5000K	6380	5742
Regular	1800	90	2	>80	5000K	9900	8910
Regular	2400	120	2.7	>80	5000K	13200	11880
Regular	1200	58	13	>90	5000K	5486.8	4938.12
Regular	1800	90	2	>90	5000K	8514	7662.6
Regular	2400	120	2.7	>90	5000K	11352	10216.8
Regular	1200	58	13	>80	6500K	6380	5742
Regular	1800	90	2	>80	6500K	9900	8910
Regular	2400	120	2.7	>80	6500K	13200	11880
Regular	1200	58	13	>90	6500K	5486.8	4938.12
Regular	1800	90	2	>90	6500K	8514	7662.6
Regular	2400	120	2.7	>90	6500K	11352	10216.8
High-Efficiency	1200	47	1.05	>80	4000K	7050	6345
High-Efficiency	1800	70	1.6	>80	4000K	10500	9450
High-Efficiency	2400	86	2	>80	4000K	12900	11610
High-Efficiency	1200	47	1.05	>90	4000K	6486	5837.4
High-Efficiency	1800	70	1.6	>90	4000K	9660	8694
High-Efficiency	2400	86	2	>90	4000K	11868	10681.2
High-Efficiency	1200	47	1.05	>80	2700K	6697.5	6027.75
High-Efficiency	1800	70	1.6	>80	2700K	9975	8977.5
High-Efficiency	2400	86	2	>80	2700K	12255	11029.5
High-Efficiency	1200	47	1.05	>90	2700K	6161.7	5545.53
High-Efficiency	1800	70	1.6	>90	2700K	9177	8259.3
High-Efficiency	2400	86	2	>90	2700K	11274.6	10147.14
High-Efficiency	1200	47	1.05	>80	3000K	7050	6345
High-Efficiency	1800	70	1.6	>80	3000K	10500	9450
High-Efficiency	2400	86	2	>80	3000K	12900	11610
High-Efficiency	1200	47	1.05	>90	3000K	6486	5837.4
High-Efficiency	1800	70	1.6	>90	3000K	9660	8694
High-Efficiency	2400	86	2	>90	3000K	11868	10681.2
High-Efficiency	1200	47	1.05	>80	5000K	7050	6345
High-Efficiency	1800	70	1.6	>80	5000K	10500	9450
High-Efficiency	2400	86	2	>80	5000K	12900	11610

High-Efficiency	1200	47	1.05	>90	5000K	6486	5837.4
High-Efficiency	1800	70	1.6	>90	5000K	9660	8694
High-Efficiency	2400	86	2	>90	5000K	11868	10681.2
High-Efficiency	1200	47	1.05	>80	6500K	7050	6345
High-Efficiency	1800	70	1.6	>80	6500K	10500	9450
High-Efficiency	2400	86	2	>80	6500K	12900	11610
High-Efficiency	1200	47	1.05	>90	6500K	6486	5837.4
High-Efficiency	1800	70	1.6	>90	6500K	9660	8694
High-Efficiency	2400	86	2	>90	6500K	11868	10681.2
High efficiency-3 CCT Dial Switch	1200	47	1.05	>80	4200K	6345	5710.5
High efficiency-3 CCT Dial Switch	1800	70	1.6	>80	4200K	9450	8505
High efficiency-3 CCT Dial Switch	2400	86	2	>80	4200K	11610	10449
High efficiency-3 CCT Dial Switch	1200	47	1.05	>90	4200K	5837.4	5253.66
High efficiency-3 CCT Dial Switch	1800	70	1.6	>90	4200K	8694	7824.6
High efficiency-3 CCT Dial Switch	2400	86	2	>90	4200K	10681.2	9613.08
High efficiency-3 CCT Dial Switch	1200	47	1.05	>80	3000K	6110	5499
High efficiency-3 CCT Dial Switch	1800	70	1.6	>80	3000K	9100	8190
High efficiency-3 CCT Dial Switch	2400	86	2	>80	3000K	11180	10062
High efficiency-3 CCT Dial Switch	1200	47	1.05	>90	3000K	5621.2	5059.08
High efficiency-3 CCT Dial Switch	1800	70	1.6	>90	3000K	8372	7534.8
High efficiency-3 CCT Dial Switch	2400	86	2	>90	3000K	10285.6	9257.04
High efficiency-3 CCT Dial Switch	1200	47	1.05	>80	6500K	6110	5499
High efficiency-3 CCT Dial Switch	1800	70	1.6	>80	6500K	9100	8190
High efficiency-3 CCT Dial Switch	2400	86	2	>80	6500K	11180	10062
High efficiency-3 CCT Dial Switch	1200	47	1.05	>90	6500K	5621.2	5059.08
High efficiency-3 CCT Dial Switch	1800	70	1.6	>90	6500K	8372	7534.8
High efficiency-3 CCT Dial Switch	2400	86	2	>90	6500K	10285.6	9257.04

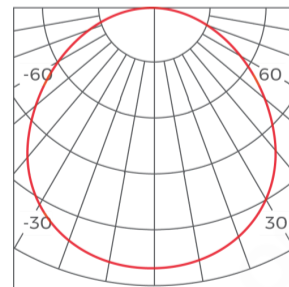
Light Distribution

Regular Version



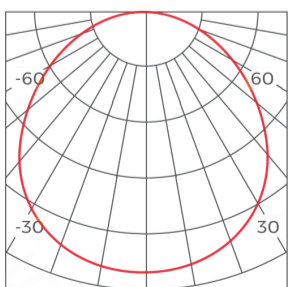
h(m)	D(cm)	E(lx)
1	248	1602
2	498	401
3	747	178
4	995	100

High efficiency Version



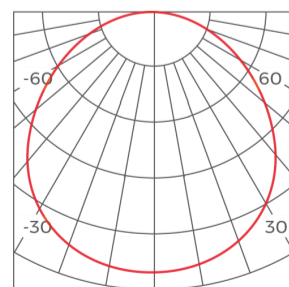
h(m)	D(cm)	E(lx)
1	248	1777
2	497	444
3	745	198
4	993	111

Regular-3CCT Dial Switch Version



h(m)	D(cm)	E(lx)
1	251	1504
2	503	376
3	754	167
4	1005	94

High efficiency-3CCT Dial Switch Version



h(m)	D(cm)	E(lx)
1	251	1804
2	503	451
3	754	200
4	1005	94

Common Accessories

Standard Corner



MH50FD-L90

Applicable product model: MH50FD
Installation method: L-shaped 90° splicing
Material process: AL6063-T5/spraying
Coating: Black(RAL9006), White(RAL9003)
Diffuser Nature: Diffuser
Light source: Constant Current Rigid PCB
Size: L300*W50*H65mm

Power feeder



CM-27

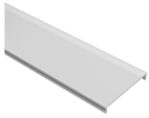
Applicable product model: MS50/MH50/MS70/MH70
Type: Non-dimming
Input line(3PIN)
Material process: Wiring cover: AL6061/Input line: PVC
Size: Wiring cover: 113*23.2*1.5mm/Input line: 2200*φ6mm
Quantity: 1PCS/set
Others: Including 1pcs wiring cover+1pcs input line



CM-28

Applicable product model: MS50/MH50/MS70/MH70
Type: Dimming
Input line(5PIN)
Material process: Wiring cover: AL6061/Input line: PVC
Size: Wiring cover: 113*23.2*1.5mm/Input line: 2200*φ7.2mm
Quantity: 1PCS/set
Others: Including 1pcs wiring cover+1pcs input line

Cover



CV-MS50FD

Applicable product model: MS50FD/MH50FD(suitable for down-lighting)
Diffuser Nature: Diffuser
Material process: PC
Light transmittance: 80%
Size: 50m/Reel: 50000*45.8*5.9mm
Other: Fire protection rating UL94-V2;

End cap accessory



EC-MS50

Applicable product model: MS50/MH50
Material process: ADC12/powder-coated
Size: L50.2*W65.7*H17mm
Quantity: 2PCS/set

Installation accessory



PN(E)-D

Applicable product model: LINE ECO series
Installation method: Pendant
Material process: Nickel plating
Size: /
Quantity: 2PCS/SET
Other: 2 meter wire rope 2PCS, cable locker 2PCS, cable holder 2PCS, M5 flat head Phillips screws 2PCS, M4*35mm screws 2PCS, expansion tube 2PCS



PN-DXX

Applicable product model: LS1911C/LS1911K/LS3535/LS5050/LS3360/LS4067/LS5470(F)/LS7977/LT60/BH3360/BH5470/BH7977/BS3360/BS5470/BS7977/LS5470(F)/LS7977/LT60/LINE40 series product/LINE60 series product/TLS-R6X0 track
Installation method: Pendant
Material process: Pearl Chrome
Size: /
Quantity: 2PCS/set
Other: Junction box not included, 2 pcs pendant cable accessory, pendant cable length 4m, rectangular screw model.



PY(E)-D

Applicable product model: MS35/MH35/MS50/MH50/MS70/MH70
Installation method: Junction Box (pendant wire)
Material process: SPCC/Spraying surface
Size: Box: D80*30*1mm, Pendant wire: D1.5*2000/4000mm
Quantity: 1 set
Other: Including junction box, 2PCS wire rope, wire rope 2M/4M length optional

Packing

Size (mm/box)	Quantity /box	QTY/CTN	NW (kg/box)	N. WT (ctn)	G.WT (ctn)	Size (cm/carton)	Product Size (mm)
1215*85*55mm	1	6	1.45	8.7	10.4	1220*185*175mm	1208*50*65mm
1815*85*55mm	1	6	2.1	12.6	14.9	1820*185*175mm	1803*50*65mm
2410*85*55mm	1	6	2.8	16.8	19.7	2415*185*175mm	2399*50*65mm

Attentions

- 1、 Non-professionals are prohibited from installing, disassembling and repairing the product.
- 2、 Avoid scratching, distortion and irregular bending of the product during installation; otherwise it may cause irreparable damage to the product.
- 3、 Please use professional cutting tools when cutting
- 4、 Do not use any acid or alkaline adhesive to fix products
- 5、 The product is only suitable for indoor dry places, can not be used in outdoor, seaside or wet environment.
- 6、 PC features: Each 10°C rise or drop will make diffuser extend or shrink 0.8mm/m, please confirm before processing and use